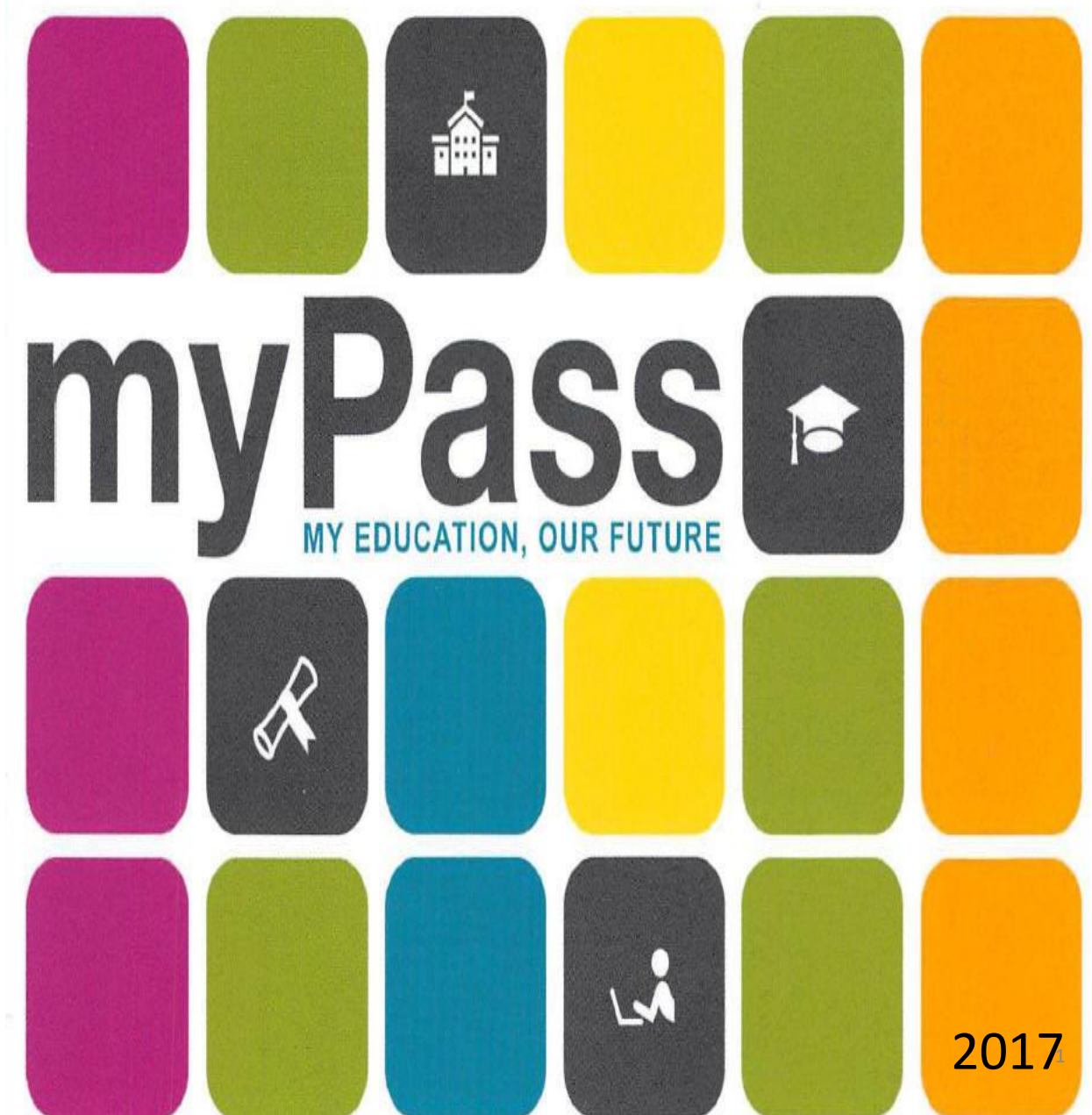


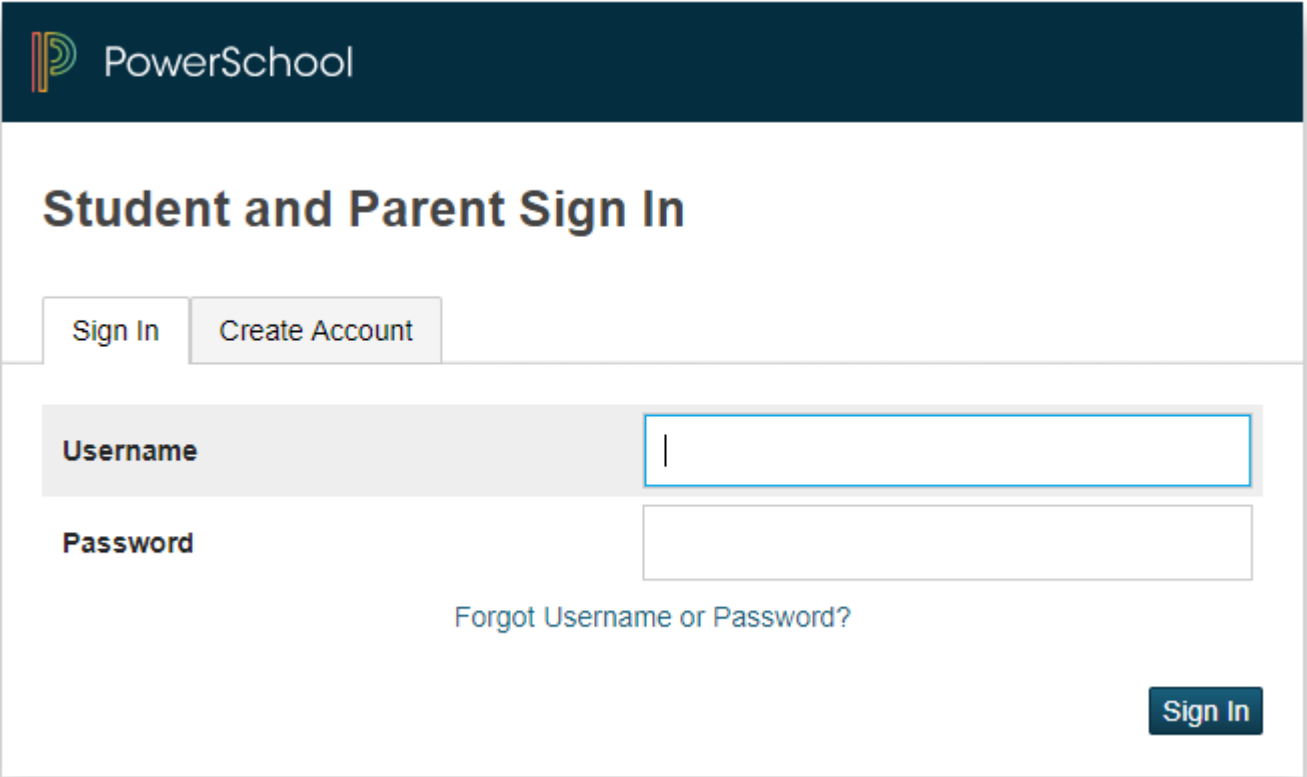
# How to sign up for STUDENT ACCESS



# Go to the **SEXSMITH SECONDARY SCHOOL** Web site

You need your **ASN (Alberta School Number)** from Powerschool.

**Sign into Powerschool like you would normally.**



The screenshot shows the PowerSchool login interface. At the top is a dark blue header with the PowerSchool logo and name. Below this is a white section titled "Student and Parent Sign In". There are two buttons: "Sign In" and "Create Account". Below the buttons are two input fields: "Username" and "Password". The "Username" field has a blue border and a cursor. Below the "Password" field is a link that says "Forgot Username or Password?". At the bottom right is a dark blue "Sign In" button.

PowerSchool

## Student and Parent Sign In

Sign In Create Account

Username

Password

[Forgot Username or Password?](#)

Sign In

10:26 AM

sis.pwsd76.ab.ca

Powerschool

Grades and Attendance: Rice, Damian David Andre

Alberta Student Number(ASN): 304422751

Click Here to see all your past assignments for this term.

Grades and Attendance Standards Grades

Attendance By Class

Exp	Last Week					This Week					Course	Absences												
	M	T	W	H	F	M	T	W	H	F		Q1	Q2	E1	S1	Q3	Q4	G1	E2	S2	Y1	Q2	16-17	
1(M1-F2)																								
2(M1,W1,F1-M2,W2,F2)																								
3(M1,W1,F1-M2,W2,F2)																								
4(T2,Th2,T1,Th1)																								
5(M1-F2)																								

Physical Education 20 (5 cr) Mactsaac, Sophia - Rm. 165

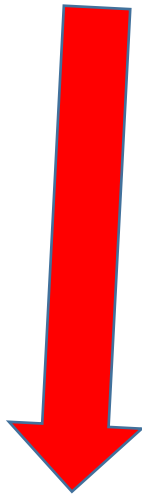
iPLAN Nielsen, Dancy - Rm. 153

Social Studies 30-1 Bednard, Karin - 153

60 51

16 19

# This where you find your ASN



Grade: 12 ASN: 107310989 School: SSS Status:

Wednesday	Thursday	Friday
-----------	----------	--------



**WRITE** down the number on  
a piece of paper.



**You need an email account  
that is  
NOT  
your school account.**



**Put some thought into  
your account name.**

**If you have one that is  
inappropriate you may want  
to make a new one.**

**Perspective employers,  
universities, colleges or trade  
schools, and the  
Government of Alberta  
will be looking at it.**

**Either go to your account or  
create a new one.**

## **TO CREATE A NEW EMAIL ACCOUNT**



Go to Google:  
sign up for an OUTLOOK account

---

**OR**

## Create a Gmail account

To sign up for Gmail, create a Google Account.

### Sign up for Gmail

It's free to create a Google Account. You can use the username and password for your Google Account to sign in to Gmail and other Google products like YouTube, Google Play, and Google Drive.

1. Visit the [Google Account creation page](#) [↗](#).
2. Follow the steps on the screen to complete your account setup.
3. After you've created your Google Account, you can use it to [sign in to Gmail](#) on your computer, phone, or tablet.

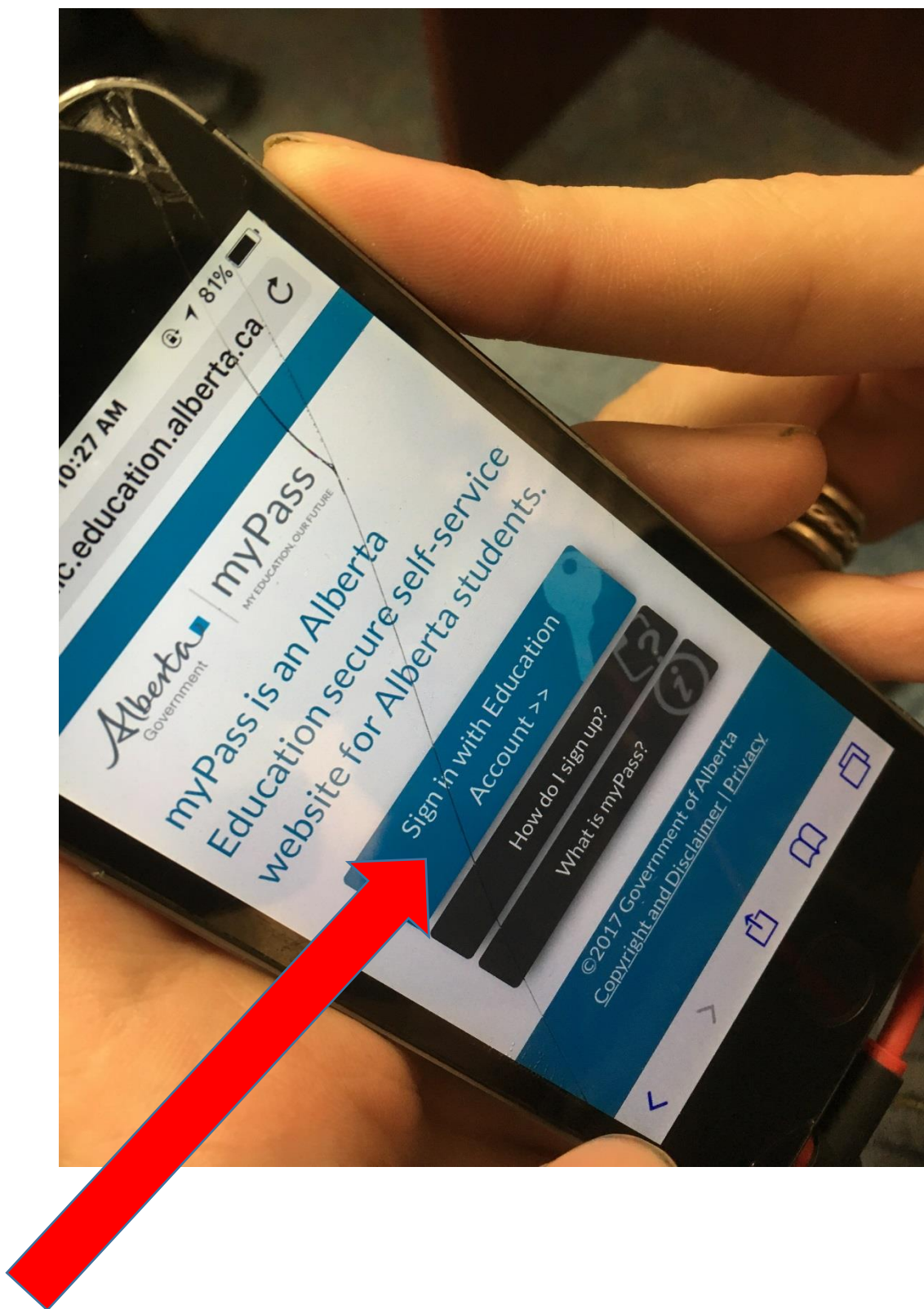
**CREATE AN ACCOUNT**

# Student Information

PowerSchool Student Login	Webmail Log In
Rotating Block Schedule	iLearn
Bell Schedule	Counselling
CTS Program	Grad 2015-2016
Student Services	Student Resources
Career Exploration	My Blueprint
Scholarships	Graduation Requirements
First Nations, Métis and Inuit (FNMI) Program	myPass
Star 360	Accountability Pillar Survey



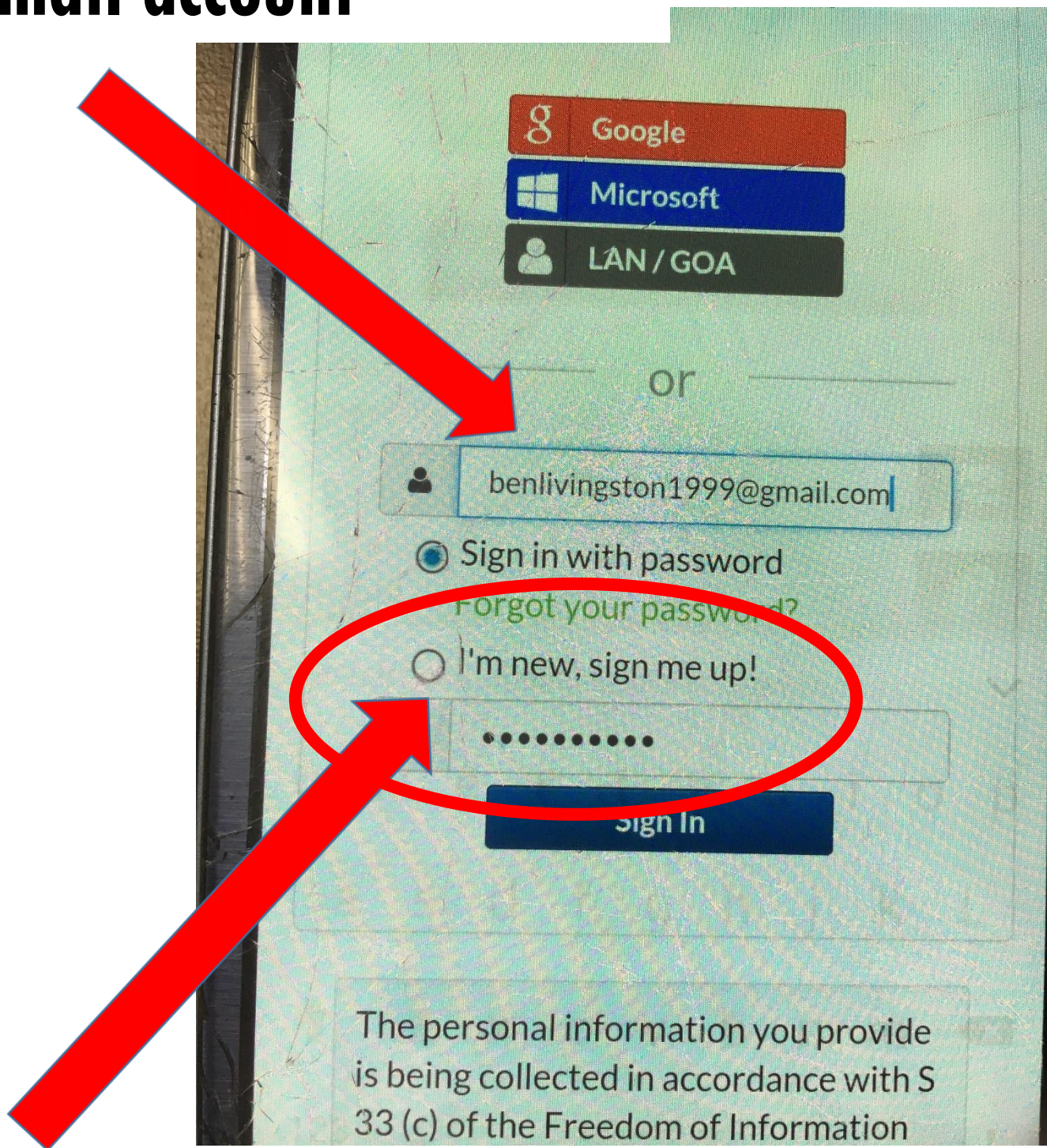
Now go to  
mypass  
under **Students**



**“Click” on this  
button**



**Put in your  
NON-SCHOOL  
email account**



**Make sure you “CLICK” this**



# mypass

will send you an email



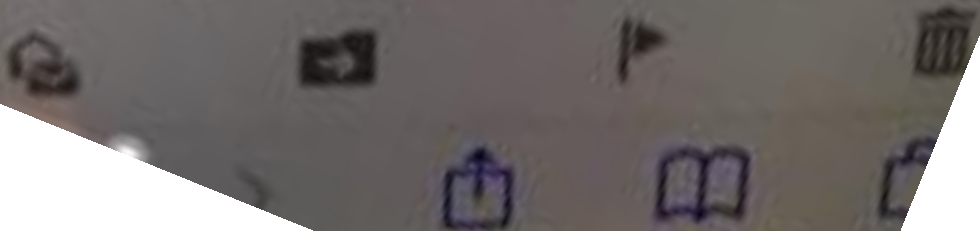
# CONFIRM

Dear v

Confirm this email address  
clicking this link:

<https://account.education.alberta.ca/Pas.Account/en-CA/c/1zVmWcbGjQ9GzS9Wi4SkdQ2>

More information about this email:



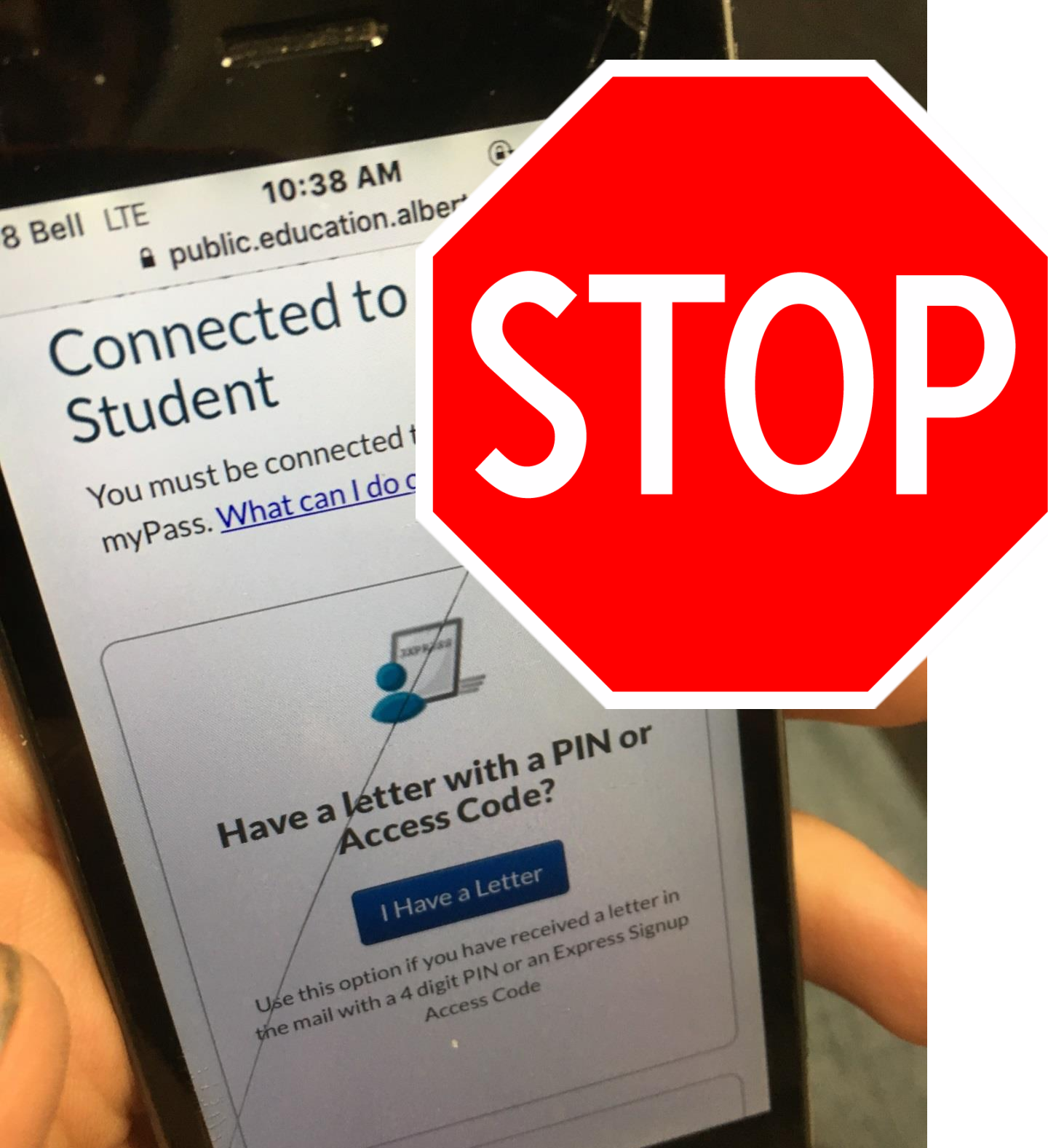


**Create your “screen name”  
and password.**

**MAKE SURE IT IS  
SOMETHING YOU WILL  
REMEMBER.  
YOU MAY NOT ACCESS  
THIS FOR A LONG TIME.**

-108 Bell LTE 10:37 AM  
account.education.alberta.ca  
Create your new Screen Name:  
Alfikesh666  
OK  
New Password:  
●●m  
6 more characters, at least one number  
symbol  
Confirm:  
Suggest Password Done

**Stop  
On the next screen**



**DO NOT**

**“Click”**

**on this page.**

**THIS IS FOR PARENTS**

**You need a pin from an  
ADMINISTRATOR OR**

**COUNSELLOR**



## How to get your pin:

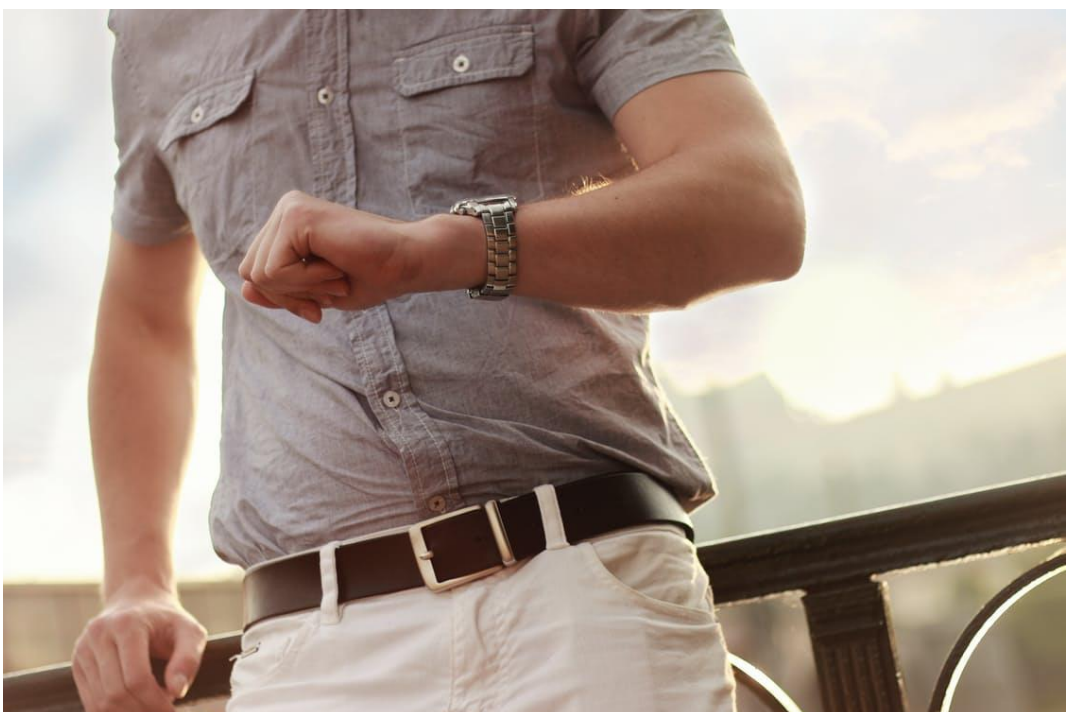
- Tell Admin/Couns. you are ready
- Give your ASN number
- They will ask for your email address

# WAIT

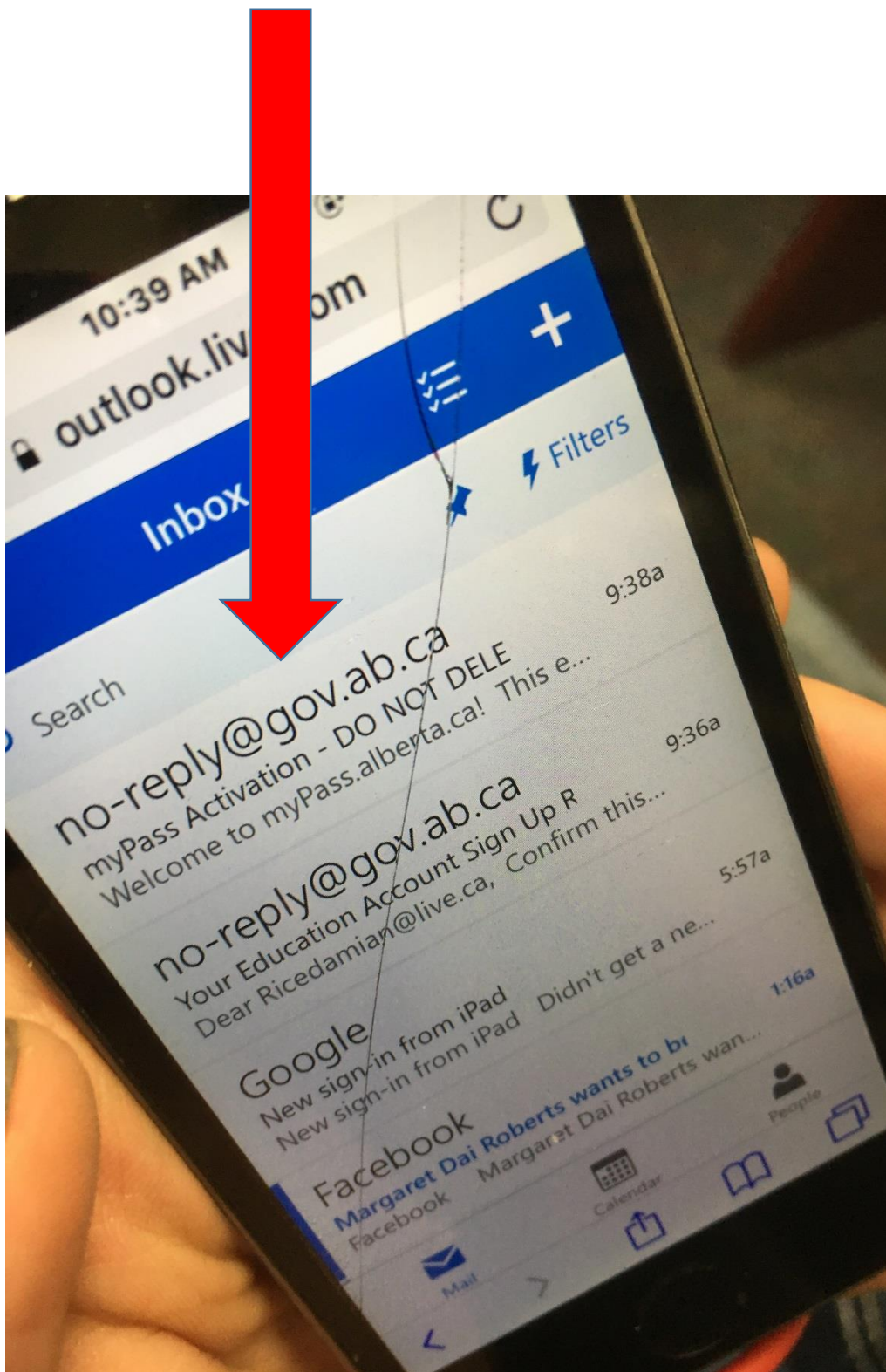
for **2nd email** to arrive from mypass.

Staff member is sending it to you.

It may take a few minutes.



You were sent a 2nd email  
from **mypass** that the  
school has generated.  
It will have your PIN.





# Welcome to [myPass.alberta.ca!](https://myPass.alberta.ca)

This email has been generated in response to your request for access to the information for Benjamin Wayne Livingston.

In order to complete the setup, you will need to have the PIN that was provided to you when you requested access.

If you have not created an Education Account for yourself yet, then follow these steps:

1. Click on the following to complete the setup:  
[Activate Connection](#)  
Follow the on-screen instructions to create your Education Account and wait for the confirmation email.
3. Confirm the setup of your Education Account.
4. If you are forwarded on to the Activate Connection page, then complete the setup by providing the PIN and follow the on-screen instructions.
5. If you are forwarded to the No Connections page, then come back to this email and follow the instructions if you have an Education Account.

If you have an Education Account, then follow these steps:

1. Click on the following to complete the setup:  
[Activate Connection](#)
2. Complete the setup by providing the PIN and follow the on-screen instructions.

Once you have completed the setup, use

NOT THIS  
ONE

“click” second (2nd)  
[Activate Connection](#)



## PIN Required to Activate a New Connection

In order to activate the connection to the student, you will need to enter the security PIN.

If you made the connection request online, the PIN is provided in a letter sent to the student's mailing address.

If you made the connection request in person, the PIN was given to you by the person you made the request to.

If you have forgotten or misplaced the PIN, then you will need to make another request for access.

**PIN**

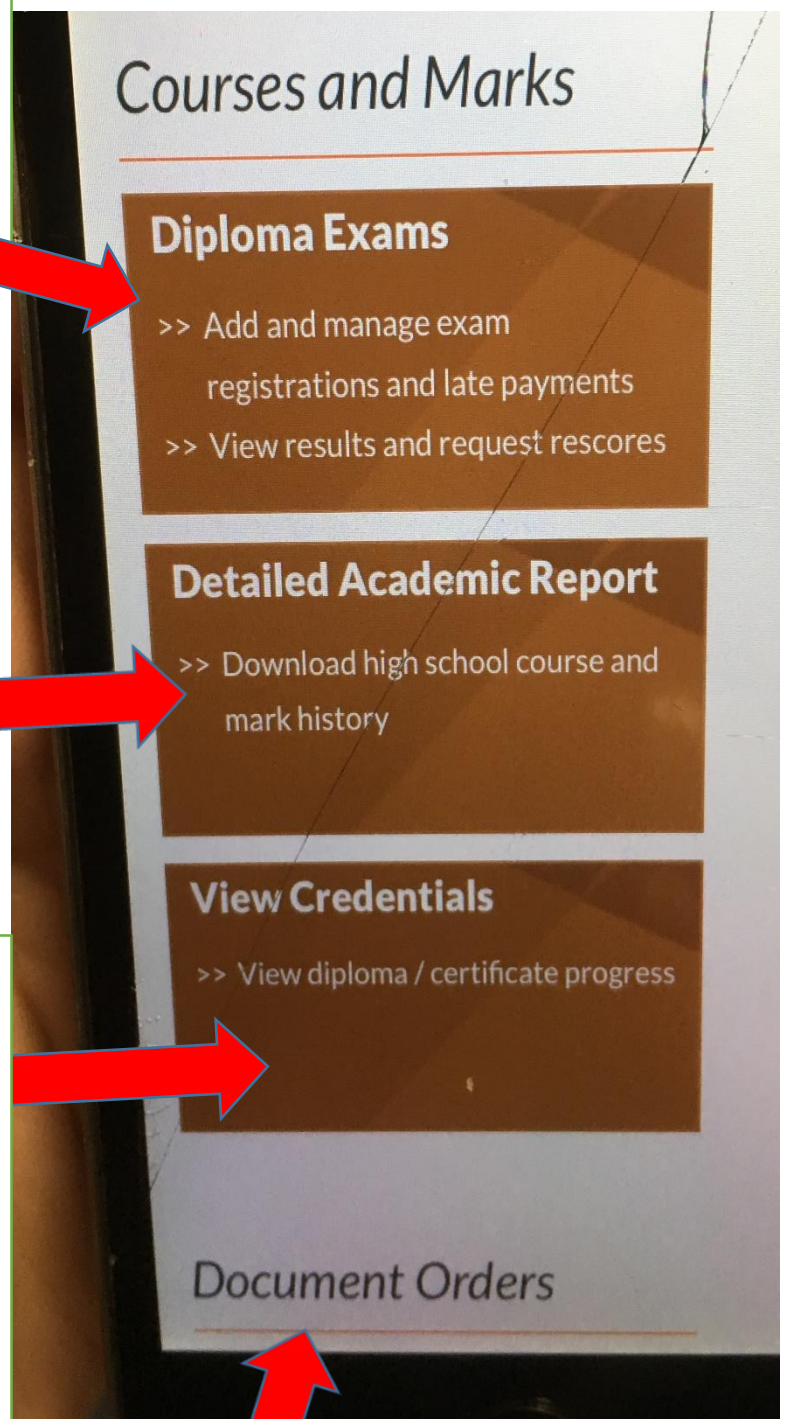
By clicking **Accept and Activate the Connection** button below, you agree to be bound by the [myPass Terms of Use Agreement](#)

**Put in the  
PIN  
from the email**

This will give you diploma exam marks

This gives a list of all marks in all courses

This will give you a checklist showing grad requirements that you have met.



Look Here  
to send  
Transcripts  
to colleges, universities or  
trade schools.





**CONGRATULATIONS**  
You have  
enrolled in  
mypass  
successfully