

# Spirit River Regional Academy

## NEWSLETTER

### *Home of the Renegades*

<http://www.pwsd76.ab.ca/school/spiritriverregionalacademy>

September 12, 2011, Number 1

#### **SRRA Welcome Back Pancake Breakfast!**

SRRA staff prepared a welcome back pancake breakfast for all students on Thursday, September 8<sup>th</sup>.



We would also like to welcome our new staff, Mrs. Chelsey Burbee, Miss Robyn Lieverse, and Miss Carolyn Kelly. We have had a good start to the year and we look forward to another successful year.

Student/parent handbooks and a magnetic school calendar have been distributed to all students. Parents wishing to come in and meet their children's teachers please call or email to arrange a meeting. All staff can be reached through email by inserting their full name in the following email address: [fullname@pwsd76.ab.ca](mailto:fullname@pwsd76.ab.ca)

#### **School Fees**

Grades 1 – 6: \$75.00  
Junior High: \$60.00 + SU + Options  
Senior High: \$80.00 + SU + Options

For more clarification on fees, please refer to your child's handbook, on pages 23.

School fees are due  
September 30, 2011. If you are unable to send your child's fees in by then, please call the school to make alternate arrangements.

Thank you!



Please make cheques payable to  
"Spirit River Regional Academy"

#### **SCHOOL PHOTOS**

**SEPTEMBER 29<sup>TH</sup>  
9AM  
PRESCHOOL,  
ECS – GR. 12**



**Annual Academic  
Jr/Sr Awards  
September 29, 2011  
2:00 - 3:15 pm**

## VOLLEYBALL NEWS

The varsity volleyball teams got their season rolling over the September 9<sup>th</sup> & 10<sup>th</sup> weekend at their annual “Early Bird” tournament.

The boys’ had a great weekend finishing 5<sup>th</sup> after losing a very close match to the eventual champions from Peace High 25-23, 25-20 in the quarter finals.



The varsity girls’ team had a successful weekend capturing the gold medal for a fourth straight year. The girls’ faced a very tough Beaverlodge team in the final winning 25-22, 25-18.

***A HUGE THANKS TO ALL THE OFFICIALS, SCOREKEEPERS, and LINES KEEPERS.***

### Varsity Girls Volleyball Schedule

Sept. 23<sup>rd</sup> & 24<sup>th</sup>- GPRC Big Red  
(Grande Prairie)

Oct. 7<sup>th</sup> & 8<sup>th</sup>- Spruce Grove  
International

Oct. 20<sup>th</sup>-22<sup>nd</sup>- Lion’s Western  
Canadian Challenge  
(Morinville)

Oct. 28<sup>th</sup> & 29<sup>th</sup>- Sean Henry Memorial  
(Fairview)

Nov. 11<sup>th</sup> & 12<sup>th</sup>- Peace Classic  
(Peace River)

Nov. 18<sup>th</sup> & 19<sup>th</sup>- Zone Championships  
(Peace River)

Nov. 24<sup>th</sup>-26<sup>th</sup>- 2A ASAA Provincial  
Championships  
(Spirit River)

## LIBRARY SCHEDULE

Monday  
Preschool

Wednesday  
Grade 1, 2, 3/4, 9A, 9B

Thursday  
ECS, Grade 5/6, 7/8

Friday  
Junior K.



### Speech-Language Services in Your School

The Speech-Language Pathologist serving your school is: Sheila Knoot

**Services include help with:**

- speech sounds
- sentence structure
- vocabulary
- basic concepts
- following directions
- understanding language
  - social skills
  - stuttering
  - pre-reading skills



Services may include: classroom visits, one-on-one sessions, testing, parent meetings. Your school provides Speech-Language Assistant time to help carry-out intervention programs. Parents are also provided with home practice materials.

Communication skills directly impact reading and writing skills.

Kindergarten staff often screen speech and language skills in order to identify children needing help before grade one.

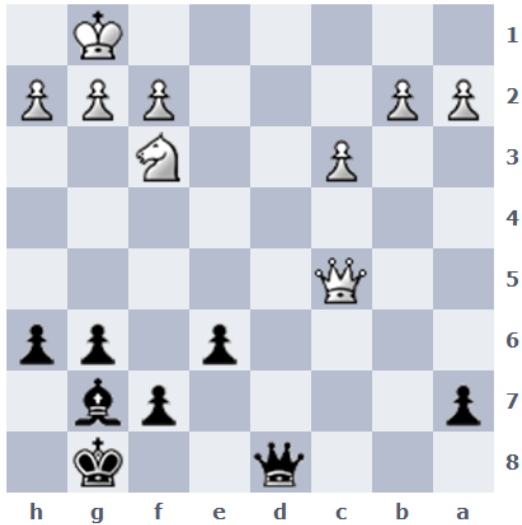
For more information or to request services for your child, call Sheila at (780) 864-4722.

Mr. Martin's Chess Puzzles

Anticipate your opponent's next move!!

It is white's move. White already has a material advantage and is eyeing the black pawn on a7. By eliminating this pawn, white will have a clear advance for his three pawns. (A pawn that crosses the board is promoted to any other piece, usually a queen).

If white is hasty, he may fail to see black's next devastating move. What move must white anticipate or else lose the game?



Black's queen to d1 is checkmate on white.

# Jokes of the Week

