

# DUAL CREDIT NEWS

---

## In this issue:

- Dual Credit Signing
- Application Packages
- Courses set for January
- Programs in the works
- Courses in the works

## Why a Newsletter

Dual credit is growing by the day. Changes are imminent and continual. The purpose of this newsletter is to provide the latest most up-to-date information.

### Dual Credit Gives High School Students a Head Start.

Released: Friday, October 24th, 2014

A new partnership between Grande Prairie area schools and Grande Prairie Regional College will give interested students a head start on their post-secondary education. The Dual Credit program will allow a high school student to earn both high school and college credits for the same course, thus making progress toward a college program before finishing high school.

Superintendents of Grande Prairie Public School District, Grande Prairie Catholic Schools, and Peace Wapiti School Division signed the agreement today with Susan Bansgrove, Vice-President Academics and Research.

Selected GPRC courses are available for dual credit study, and taught by a College instructor with the involvement of the secondary school teacher. Currently, dual credit opportunities include courses in Office Administration, Business Administration, Arts & Science, and Early Learning and Childhood Development. All applications to participate in these opportunities are managed by the student's high school.

"The new Dual Credit program offered by GPRC will provide increased programing flexibility for high school students at Peace Wapiti Public School Division," says Superintendent Sheldon Rowe. "We are excited to partner with GPRC in providing our students with more options for future success, and we hope that post-secondary institutions will continue to expand their offerings to our students."

"Today's announcement opens new doors for students to explore as they continue on in their education and career journey," says Carol Ann Macdonald, Superintendent of Grande Prairie Public School District. "Providing students with the ability to earn post-secondary credits while they are still attending high school, is a wonderful opportunity for students in our District."

"As a Superintendent, I am pleased that GPRC is taking steps to blur the line between high school and post-secondary so more students find their passion and succeed in school in a variety of ways," says Karl Germann, who is Superintendent of Grande Prairie & District Catholic Schools, and President of the College of Alberta School Superintendents. "The Provincial Dual Credit Strategy contributes to, and aligns with, the Premier's mandate and creates more opportunities for students to earn credits in high school and post-secondary institutions at the same time, as well as opportunities for preferred placement (when post-secondary institutions exempt students from a course) and workplace certification," Germann says. "Speaking as the CASS President, we believe the Dual Credit strategy hold great promise for all Alberta students."

"We are very pleased to be entering into this partnership with the schools to enhance opportunities for the students of our region," says Bansgrove. "The research indicates a number of benefits for students in dual credit programs, including better attendance, engagement and achievement as well as career and life goal-setting."



***Carol Ann Macdonald, Superintendent of Grande Prairie Public School District signed the agreement October 24th with Susan Bansgrove, Vice-President Academics and Research.***



**Grande Prairie** and District  
**Catholic Schools**



**PEACE WAPITI PUBLIC  
SCHOOL DIVISION NO. 76**  
EDUCATING TODAY FOR SUCCESS TOMORROW

## Application Packages

by School  
Division

Just click on  
logo to view or  
print.



**It is not too late for  
January!**

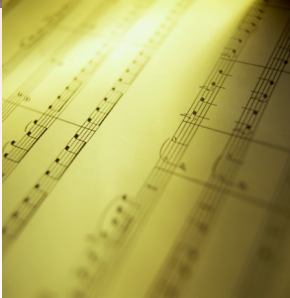
**Our goal is to have  
applications by Dec.  
12 so we have time to  
process, accept and  
communicate with  
students before Xmas  
holidays.**

**GPRC**

# January 2015 Courses

<b>PY1040</b>	<b>Basic Psychologi- cal Processes</b>	Very useful course for UT, such as Education, Commerce, Nursing, Phys Ed, Science, Fine Arts, Social Work, etc.	In person on GP Campus or Video Conference (VC)
<b>MA1130</b>	<b>Elementary Calculus</b>	Bachelor of Science UT Science	Available in person on GP Campus
<b>OA2511</b>	<b>Medical Terminology</b>	Office Admin Unit Clerk  Required entry for SAIT/ NAIT Medical Radiology Tech Diagnostic Med Sonogra- phy Combined Lab & Xray Medical Lab Tech	In person on GP Campus or Video Conference
<b>OA1060</b>	<b>Microsoft</b>	Office Administration	In person or VC
<b>BA1010</b>	<b>Business Communica- tions</b>	Business Administration Fitness Leadership Hospitality & Tourism Management	In person on GP Campus or Video Conference
<b>BA1090</b>	<b>Intro to Marketing</b>	Business Administration Hospitality & Tourism	In person on GP Campus or Video Conference
<b>BA1110</b>	<b>Intro to Accounting</b>	Business Administration Hospitality & Tourism	In person on GP Campus or Video Conference
<b>OA1140</b>	<b>Microsoft Excel</b>	Office Administration	In person or VC
<b>DD1021</b>	<b>Popular Music in the Twentieth</b>	Music , UT elective, Fine Arts, Education, etc	Available in person on GP Campus

# Programs in the works for 2015-2016



Animal Health Technology

Fitness Leadership Certificate

Early Learning Childcare

Educational Assistant

Beekeeping

Harley Davidson® Technician

Fine Arts, Music

Parts Material Technician

Findings suggest that there is a positive correlation between dual credit programs and positive outcomes in program participants, such as higher GPAs and a greater likelihood of pursuing college and persisting (Karp & Hughes, 2008; Whittaker, 2011).



# Individual Courses to be made available 2015-2016

<b>ID2020</b>	<b>Interdisciplinary Topics in Contemporary Media: Comic Books</b>
<b>HP1210</b>	<b>Tourism Operations Management</b>
<b>OA1150</b>	<b>Microsoft Access</b>
<b>CD1020</b>	<b>Health, Nutrition &amp; Safety (Early Learning)</b>
<b>BA1150</b>	<b>Introduction to Computers in Business</b>
<b>PE1000</b>	<b>Structural Anatomy</b>
<b>PE1015</b>	<b>Essentials of Human Anatomy</b>
<b>PE1030</b>	<b>Integrative Human Physiology</b>
<b>OA2520</b>	<b>Petroleum Terminology for Field Operations</b>
<b>DR1200</b>	<b>Drama - Performance 1</b>

A Big THANK YOU to all the School Divisions who have been instrumental in moving this initiative forward. I look forward to the new year, and to all the continued success we see in Dual Credit and our partnerships!

Darlene

## Want to be involved?

To find out more, or to share your ideas:

**Darlene MacDonald**

Dual Credit Coordinator

10726-106 Ave, Grande Prairie, AB T8V 4C4

Ph: 780-539-2217

Email: [dmacdonald@gprc.ab.ca](mailto:dmacdonald@gprc.ab.ca)

